

47 X 64

CERTIFICATE OF OWNERSHIP AND DEDICATION

COOPER FARMS SECTION 1B
TOP WALNUT LOOP, FOX-HAVEN ROAD, FRANKLIN FARMER WAY
COOPER FARMS, A KENTUCKY GENERAL PARTNERSHIP

BEARINGS & DISTANCES
23 N 00°04'08" W 58.50'
24 S 19°01'58" E 33.47'

PROPERTY OWNERS
LOT 25 Christopher & Alicia Hoppe
LOT 26 Trilog Properties, LLC
LOT 27 Cooper Farms

NOTICE OF RESERVATION OF GAS EASEMENT
The space outlined by dashed lines and marked 'Gas Easement' on the plat is reserved for the installation and maintenance of gas mains and service lines.

NOTICE OF RESERVATION OF WATER LINE EASEMENT
The space outlined by dashed lines and marked 'Water Line Easement' on the plat is reserved for the installation and maintenance of water mains and service lines.

NOTICE OF RESERVATION OF SANITARY SEWER AND DRAINAGE EASEMENTS
The space outlined by dashed lines and marked 'Sanitary Sewer and Drainage Easements' on the plat is reserved for the installation and maintenance of sanitary sewer and drainage lines.

NOTICE OF RESERVATION OF UTILITY EASEMENTS
The space outlined by dashed lines and marked 'Utility Easements' on the plat is reserved for the installation and maintenance of utility lines.

NOTICE OF BOND REQUIREMENT
After construction approved and released, the undersigned shall deposit with the Clerk of the Circuit Court of Jefferson County a cash bond in the amount of \$200,000.00.

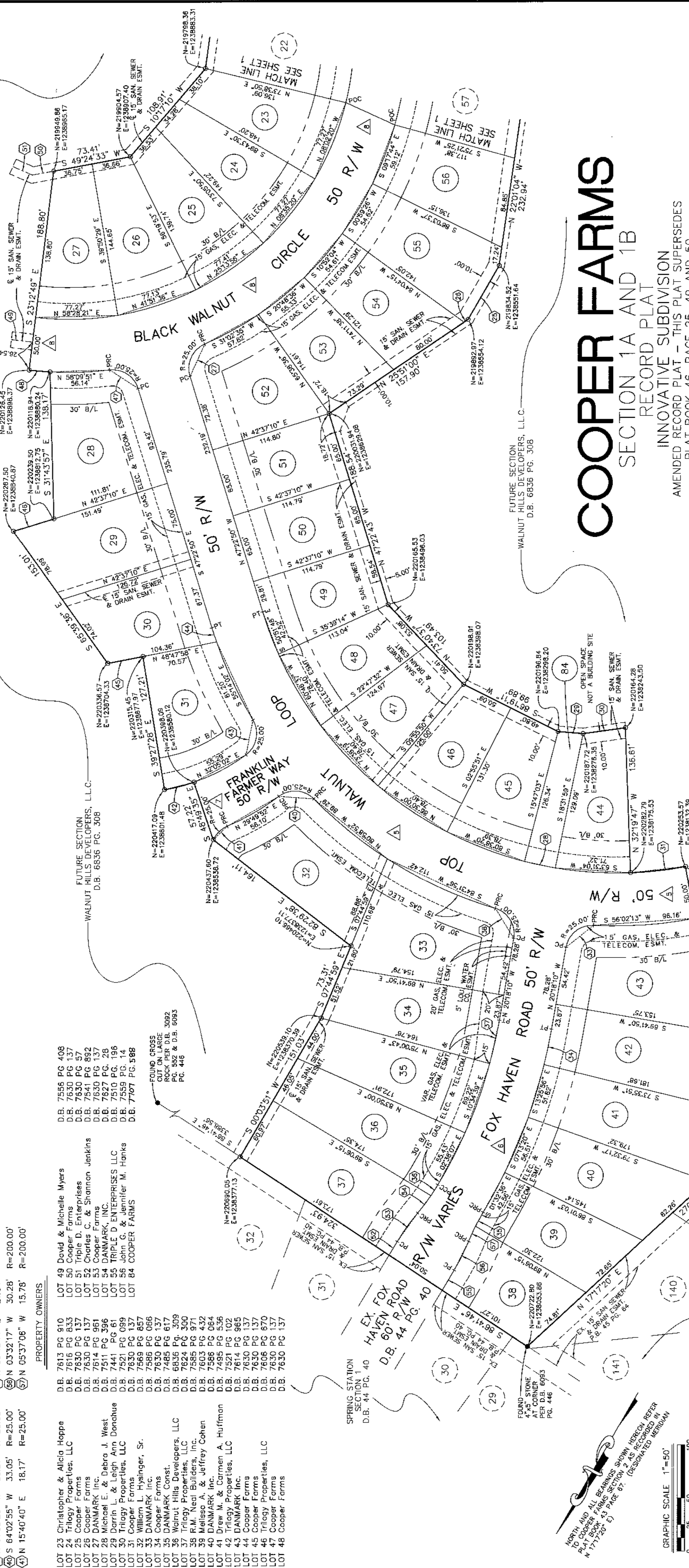
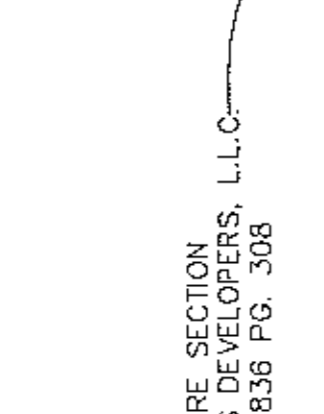
NOTICE OF BOND REQUIREMENT
After construction approved and released, the undersigned shall deposit with the Clerk of the Circuit Court of Jefferson County a cash bond in the amount of \$200,000.00.

- 9.) THIS PROPERTY IS NOT LOCATED IN A 100 YEAR FLOOD HAZARD AREA. THIS DETERMINATION WAS MADE AFTER A REVIEW OF FLOOD INSURANCE RATE MAP NO. 21111C0260 D DATED FEBRUARY 2, 1994.

- 5.) THERE SHALL BE NO FURTHER SUBDIVISION OR RESUBDIVISION OF THE LAND INTO A GREATER NUMBER OF LOTS THAN SHOWN ON THIS PLAT, UNLESS APPROVED BY THE PLANNING COMMISSION.

- 1.) THERE SHALL BE NO FURTHER SUBDIVISION OR RESUBDIVISION OF THE LAND INTO A GREATER NUMBER OF LOTS THAN SHOWN ON THIS PLAT, UNLESS APPROVED BY THE PLANNING COMMISSION.

LOCATION MAP



COOPER FARMS SECTION 1A AND 1B RECORD PLAT

INNOVATIVE SUBDIVISION AMENDED RECORD PLAT - THIS PLAT SUPERSEDES PLAT BOOK 46, PAGE 25, 49 AND 50

THE PURPOSE OF THIS PLAT IS TO CHANGE (UPDATE) THE NAME OF WALNUT HILLS SECTION 1A AND 1B INNOVATIVE SUBDIVISION TO COOPER FARMS AND CHANGE (UPDATE) THE OWNERSHIP INFORMATION.

OWNER AND DEVELOPER
COOPER FARMS, A KENTUCKY GENERAL PARTNERSHIP
11620 COMMONWEALTH DRIVE
LOUISVILLE, KENTUCKY 40222

ADJACENT PROPERTY OWNERS
SPRING STATION SECTION 1
LOT 29 - CLASSIC HOME BUILDERS, LLC

Table with 2 columns: LOT # and AREA (sq. ft.). Lists lots 23 through 48 and their respective areas.

TOTAL AREA IN SITE : 15,465 AC.
TOTAL NO. BUILDING SITES : 58
TOTAL NON-BUILDING SITES : 4

NOTICE OF RESERVATION OF WATER LINE EASEMENT
The space outlined by dashed lines and marked 'Water Line Easement' on the plat is reserved for the installation and maintenance of water mains and service lines.

NOTICE OF RESERVATION OF SANITARY SEWER AND DRAINAGE EASEMENTS
The space outlined by dashed lines and marked 'Sanitary Sewer and Drainage Easements' on the plat is reserved for the installation and maintenance of sanitary sewer and drainage lines.

NOTICE OF RESERVATION OF UTILITY EASEMENTS
The space outlined by dashed lines and marked 'Utility Easements' on the plat is reserved for the installation and maintenance of utility lines.

NOTICE OF BOND REQUIREMENT
After construction approved and released, the undersigned shall deposit with the Clerk of the Circuit Court of Jefferson County a cash bond in the amount of \$200,000.00.

Vertical text on the right edge containing survey data and contact information: P.O. BOX 7246 LOUISVILLE, KY. 40257-0246 (502)485-1508